

# Tanzania | GREAT MIGRATION SAFARI

**WILDLIFE ADVENTURE | 9 DAYS**

February 9-17, 2020

February 16-24, 2020

March 1-9, 2020

March 8-16, 2020

June 14-22, 2020

July 12-20, 2020

August 2-10, 2020

September 6-14, 2020

October 4-12, 2020

## TRIP ITINERARY



**Boundless**  
JOURNEYS

1.800.941.8010 | [www.boundlessjourneys.com](http://www.boundlessjourneys.com)

*How we deliver*

# THE WORLD'S GREAT ADVENTURES

**A passion for travel.** Simply put, we love to travel, and that infectious spirit is woven into every one of our journeys. Our staff travels the globe searching out hidden-gem inns and lodges, taste testing bistros, trattorias, and noodle stalls, and discovering the trails and plying the waterways of each remarkable destination. When we come home, we separate wheat from chaff, creating memorable adventures that will connect you with the very best qualities of each destination.

**Unique, award-winning itineraries.** Our flexible, hand-crafted journeys have received accolades from the world's most revered travel publications. Beginning from our appreciation for the world's most breathtaking and interesting destinations, we infuse our journeys with the elements of adventure and exploration that stimulate our souls and enliven our minds. Whether you are looking for a challenging physical expedition or a leisurely cultural exploration, Boundless Journeys has exceptional itineraries to match your sense of adventure.

**Insider connections.** There is simply no substitute for traveling with a knowledgeable insider, and our expert local guides will open doors for you that other travelers miss, like dinner with their extended family in Peru's Sacred Valley, or meeting an art scholar in Florence. Relationships developed over many years allow you to experience our destinations through a well-connected friend.

**Small groups.** Although the camaraderie of a group of like-minded travelers often enhances the journey, there can be too much of a good thing! We tread softly, and our average group size is just 8–10 guests, allowing us access to opportunities that would be unthinkable with a larger group.

**Flexibility to suit your travel style.** We offer both scheduled, small-group departures and custom journeys so that you can choose which works best for you. Not finding exactly what you are looking for? Let us customize a journey to fulfill your travel dreams.

**Customer service that goes the extra mile.** Having trouble finding flights that work for you? Want to surprise your traveling companion with a bottle of champagne at a tented camp in the Serengeti to celebrate an important milestone? There is no request that is too big—or too small—for our staff to handle. From your first call, we guide you through choosing your trip, provide advice on preparing for your adventure, and hold your hand until you return home.



Multi-year recipient of *Travel + Leisure* magazine's "World's Best Tour Operator"; and recognized by the editors of *National Geographic ADVENTURE* magazine as one of the **Best Adventure Travel Companies on Earth**.



# Tanzania | GREAT MIGRATION SAFARI

Thank you for your interest in this fantastic journey to Tanzania. We have hand-crafted this safari from our own experience and hope you fall in love with this incredible country—as we have!

## THE INSPIRATION FOR THIS JOURNEY

The mountains and plains of Tanzania – the Great Rift Valley, the Ngorongoro Crater, and of course, the Serengeti itself – are vibrantly alive. Here, everything that is Africa converges in a beautiful display, from the remarkable variety and sheer numbers of wild animals, to the epic landscapes that inspired the writings of Isak Dinesen, to the rich culture of the Maasai, who proudly maintain traditions while finding their way in the modern world.

Our Great Migration Safari takes in the wonders of these places at a relaxed pace, allowing us plenty of time to come to understand what has drawn travelers to East Africa for generations. Days of exploring the savannah and sparkling lakes are paired with evenings in grand African lodges, where a warm fire crackles and guests gather to swap stories of the day. Our final days in the Serengeti are spent Hemingway-style, and our luxury tented camp allows us to be close to the action, no matter when you travel. Whether you come for the wildlife, the scenery, or the culture, it is the things that are impossible to predict – a pride of lionesses on the hunt, or a rainbow breaking over a herd of elephants, or the thrilled grin of a child for the simple gift of a pencil – that will stay with you long after you leave Tanzania.

## HIGHLIGHTS

- Incomparable wildlife encounters – lions, leopards, cheetahs, elephants, giraffes, hippos, and thousands of zebras and wildebeests – pillars of one of Earth's last great migratory ecosystems.
- Legendary landscapes, from the Great Rift Valley, to the Ngorongoro Crater, to the plains of the Serengeti.
- Expert Tanzanian naturalist guides bring your safari to life.
- Well-located accommodations in astounding settings. Our luxury traditional tented camp ensures easy access to the most animals at any time of year.

SAFARI OVERVIEW .....	4
THE JOURNEY.....	6
ACCOMMODATIONS .....	10
WHAT TO EXPECT.....	12
OUR TANZANIA TEAM .....	15
NEXT STEPS .....	16
BOUNDLESS BEYOND.....	17



# SAFARI OVERVIEW



## THE BASICS

Duration:	9-day trip
Tour start/end:	Arusha, Tanzania
Accommodations:	First-class lodges and a luxury traditional tented safari camp; all private baths.
Trip rating:	<b>1</b> 2      3      4      5 Easy .....Strenuous (See page 12 for more details)
Land cost:	\$6,895 per person
Single Supplement:	First two: \$785*; Additional: \$1,285 *Must reserve at least 120 days ahead
Internal Airfare:	\$450 per person
Optional hot air ballooning:	\$635 per person - <i>please pre-book by calling 1-800-941-8010</i>



## WHAT'S INCLUDED

Just pack your bags – we've got you covered! When you're on a Boundless Journeys adventure, every detail is taken care of for you, so you can relax and truly experience each moment. Put your wallet away, leave your travel books behind, fold up your maps, and BE there. Your Boundless Journeys adventure includes:

- Expert leadership and services of safari camp staff
- All accommodations
- All meals
- Local wine and beer with included dinners
- All on-tour transportation
- Guaranteed window seating in safari vehicles
- Membership in Flying Doctors Society
- All national park fees
- All activities as noted in the itinerary
- All gratuities except for those for your guide(s) and driver, which are at your discretion
- Explorers Club savings on your next scheduled, small-group trip (conditions apply)

International airfare is not included in the price of your trip. Please contact your local travel agency or the airlines directly to make any arrangements you may need. If you would like assistance with booking your flights or other travel plans, please contact Boundless Journeys directly at 800-941-8010 for a referral to our partners who will best fulfill your needs.



## ITINERARY AT-A-GLANCE

### TYPICAL ITINERARY

*Private and customized options are also available.*

#### DAY 1

Arrival at Kilimanjaro International Airport, Arusha, Tanzania. Overnight in Arusha to rest after your travels.

#### DAY 2

Maasai Steppe, village exploration, and overnight on the Great Rift Valley Escarpment, overlooking Lake Manyara National Park.

#### DAY 3

Canopy walk and game drive in Lake Manyara National Park. Visit the home of a tribal elder, and ascend to the Ngorongoro Crater rim for overnight, overlooking one of the great natural wonders of the world.

#### DAY 4

Morning game drive in the Ngorongoro Crater. Afternoon descent and game drive to the Central Serengeti. Overnight Central Serengeti.

#### DAY 5

Full day exploring the central Serengeti. Optional hot air balloon safari (at additional expense). Overnight Central Serengeti.

#### DAY 6

Game drive to our luxury traditional tented camp, home for the next three nights, close to the great migration in Serengeti National Park.

#### DAYS 7 & 8

Game drives to witness the Great Migration and other wildlife.

#### DAY 9

Flight over the Serengeti and Great Rift Valley to Arusha. Say goodbye before your evening departure, or continue your adventure with an extension trip to Zanzibar.

# THE JOURNEY



## DAY 1: Arrival to Arusha

Upon arrival of your flight to Kilimanjaro International Airport, you are met by a Boundless Journeys representative who will transfer you to our lodge, set quietly beside Lake Duluti on the grounds of a former coffee plantation on the outskirts of Arusha.

At the lodge, you are greeted by a friendly staff, offering refreshments before turning in to rest after your travels.

**Accommodation:** Arusha Serena Hotel & Spa, Arusha

**Meals:** D

## DAY 2: Villages of the Maasai Steppe

**Activity Overview:** Cultural immersion

After a pre-safari briefing, we depart Arusha, driving across the Maasai Steppe. This expansive area of grassland dotted with trees is populated with various tribal peoples, predominantly Maasai, whose historically pastoral lifestyle is in some cases evolving into subsistence farming. Some villages have built up into small towns, and we take time to stop for a glimpse at modern African village life. We board small, motorized tuk-tuks, the primary mode of transportation in the area, allowing us to venture into farmlands, past village churches and schools. Along the way, we get an inside look at village life, perhaps even trying the locally brewed banana beer along the way.

This afternoon, we enter the Great Rift Valley, where the Earth's plates are separating. This geologic phenomenon allows for the formation of volcanoes in the region – one reason the Serengeti supports such a unique ecosystem.

We ascend the Rift Valley escarpment to our lodge for the night, beautifully set high above Lake Manyara.

**Accommodation:** Lake Manyara Serena Lodge, Rift Valley

**Meals:** B, L, D

## DAY 3: Lake Manyara

**Activity Overview:** Canopy walk, easy – about 45 minutes; game drive through Lake Manyara National Park

Even though Lake Manyara is one of Tanzania's smaller national parks, its jungle-like forest and immense "soda lake" support a great variety of wildlife. Upon entering the park, those looking for a bit of active adventure can enjoy quarter-mile canopy walk that starts on a boardwalk and gradually rises from ground level up through the canopy of the forest. You continue along a series of suspension bridges with thick netting on the sides, reaching a top height of about 35 feet off the ground. Treetop platforms are perfect places to stop and enjoy life amongst butterflies, monkeys and birds.

We continue into the park slowly, encountering pools full of hippos and a forest full of dainty gazelles and graceful giraffes meandering through the tall grass. We enjoy lunch at a viewpoint overlooking the lake, spying on animals through binoculars and scanning the trees for elusive tree-climbing lions.

Leaving Manyara, we continue through the Rift Valley, stopping at the home of Daniel Tewa. Mzee Daniel Tewa is an elder of the Iraqw (pronounced Irow) tribe who brings to life the history of his people through incredible stories in which he plays the roles of hunter, bride, warrior, and family member.





*"We will savor this wonderful experience for years to come. Boundless Journeys gave us the right combination of support, information, guides, accommodations, people, and pure delight in every moment. What a wonderful treat to be in such good hands!"*  
—P.H. & D.H., Sedona, AZ

This afternoon, we drive to the rim of the Ngorongoro Crater, a volcanic caldera home to a huge concentration of wildlife – including the “big five” – elephant, buffalo, leopard, lion, and rhinoceros. One of seven UNESCO World Heritage Sites designated in Tanzania, Ngorongoro is the world’s largest unflooded caldera. While only 100 square miles in area, the crater is home to six distinct habitats: acacia forest, swamp, short grass plains, long grass plains, rivers, and woodland, with each habitat attracting a variety of animals. The rim of the crater reaches 7,800 feet in altitude and the crater floor rests at 5,000 feet. Home to almost 30,000 animals in an area naturally enclosed by the slopes of the volcano, this is the best location in Tanzania for viewing black rhinoceros and huge, old bull elephants. There is not enough vegetation to support the large cow and calf herds, but the old male elephants “retire” to the crater for the lush swamp grass and acacia forest. The only Tanzanian game not seen in the crater are impala and giraffe. It is not known why impala do not inhabit the crater, but giraffe are unable to descend the steep grade without lowering their heads, which raises their blood pressure to dangerous levels.

By late afternoon, we arrive at our home for the night, a comfortable stone lodge on the western rim with fantastic views into the crater. This evening after the sun sets and we are sitting comfortably by a crackling fire, our thoughts will be on the crater and the unseen drama unfolding in the darkness below, on the hunters and the hunted, completing life’s circle, as they have been for thousands of years.

**Accommodation:** Ngorongoro Serena Lodge, Ngorongoro Crater

**Meals:** B, L, D

## DAY 4: Ngorongoro Crater

**Activity Overview:** Full day game drive on the crater floor and into the Serengeti

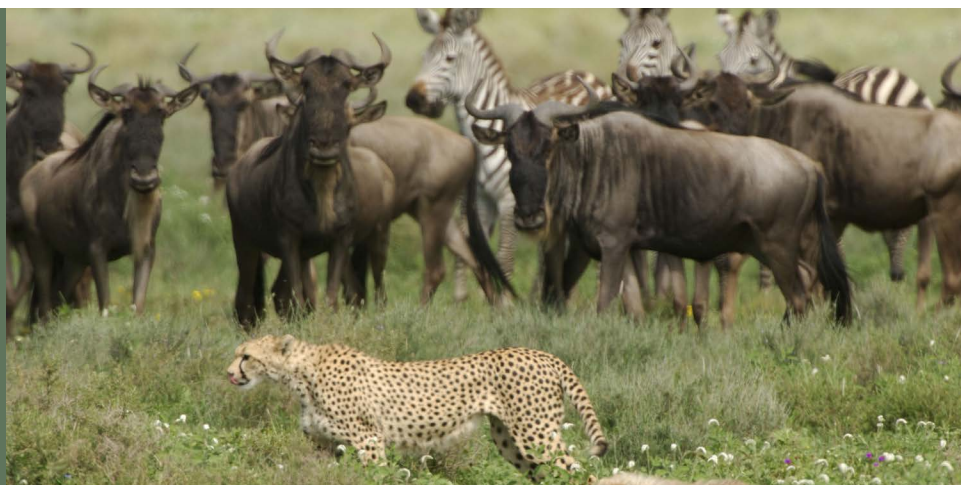
We rise early to be among the first on the crater floor. This is a magical time with the sun rising above the rim of the crater and the animals still active. We enjoy an extended game drive, with plenty of time for photography and to simply observe the interactions of the lions, cheetah, hyena, wildebeest, zebra, gazelle, buffalo and black rhinoceros. The sheer number of wild animals living in such close proximity is amazing.

Making our way slowly across the caldera floor, which contains sweeping grasslands, lerai forest, a soda lake, and marshy wetlands, one has the sense of being in another time. The landscape is so primitive, the ecosystems so intact, that it is like taking a trip to prehistory. Coming upon a lone elephant, a beautiful giant with gracefully curving tusks quietly munching on the soft grasses, listening to him breathe, is something one won’t soon forget.

This afternoon, we ascend out of the crater and make our way into the great plains of the Serengeti. Known as *Siringitu* to the Maasai, a word meaning “where the land goes on forever,” the Serengeti covers 5,700 square miles of open grassland, acacia-dotted rolling hills, and rocky outcrops known as *kopjes*. It is home to millions of Earth’s most impressive land animals, and one of the last great migratory ecosystems on the planet. Throughout the year, huge herds of wildebeest and zebra make their way from the southern plains, through the grassy woodlands, and into Kenya’s Masai Mara, before returning to the south to begin the cycle again. Even during moments when we are

*"The warm greetings of "jambo," combined with the amazing beauty and diversity of nature and wildlife that Tanzania has to offer, have left a profound imprint on my soul."*

—M.N., Los Angeles, CA



not in the midst of the migrating wildebeest and zebra, we get to know the Serengeti's other resident wildlife, including giraffe, buffalo, topi, hartebeest, waterbuck, impala, hippopotamus, elephant, crocodile, warthog, hyena, lion, cheetah, and leopard – just to name a few.

Our lodge for the next two nights is ideally located in the central Serengeti adjacent to the well-known "Western Corridor" and Grumeti River. The lodge was carefully designed to blend completely into the living landscape, with thatched cottages reminiscent of the domed "rondavels" that are typically seen across the Maasai Steppe. Groves of acacia trees and sparkling streams cool the area. On the edge of the ridge is an infinity pool, looking out over the endless plains after which the Serengeti is named.

**Accommodation:** Serena Serengeti Lodge, Central Serengeti

**Meals:** B, L, D

## DAY 5: The Serengeti

**Activity Overview:** Morning and afternoon game drives through the Serengeti plains. Optional hot air balloon safari\*

Today, we enjoy morning and afternoon game drives in the area surrounding our lodge. The Central Serengeti is renowned for its abundance of game, especially big cats, including a substantial leopard population. For those looking for a different kind of adventure, an optional (at additional expense) hot air balloon safari can be booked for the early morning. Floating silently over the great plains and herds of animals is an unforgettable experience. The approximately one hour flight is followed by a champagne bush brunch,

after which our guide will pick you up to enjoy the remainder of the day's activities—morning and afternoon game drives before dinner back at the lodge.\*

By now, we each have favorite animals—for some it is the unflappable giraffe, standing with noble grace at up to 18 feet tall. For others, it is the herds of elephants, always protective of their young. Of course, for many it is the lions, confidently gazing from their sun-warmed kopjes, quietly planning what will be on the menu tonight.

**Accommodations:** Serena Serengeti Lodge, Central Serengeti

**Meals:** B, L, D

*\*Due to a variety of factors, ballooning may instead take place on Day 7 or 8.*

## DAYS 6, 7, & 8: The Great Migration

**Activity Overview:** Morning and afternoon (or full day) game drives through the Serengeti plains

Our final days find us making our home in a traditional luxury tented camp that moves seasonally to always be close to the Great Migration. Using our camp as our base, we spend these unforgettable days searching out the enormous herds of wildebeest and zebra as they gather in the southern plains to have their babies (December-March), make their way north through the Western Corridor and crossing the Grumeti River (April-July), or in the northern Serengeti on the banks of the Mara River (August-November). As the bush is always changing, we make our plans the night before based on where the best wildlife viewing will be. Depending





on the day's plans, we may take a picnic breakfast, lunch, or both.

It is a treat to shake off the dust after a day in the bush and enjoy a cool drink as the sun sets over the Serengeti. After sundowners by the campfire, we enjoy delicious meals prepared by the camp's creative chef. Each evening, we drift off to sleep in the comfort of our safari tents, in full-size beds dressed with cozy linens, soaking in the magic of the Serengeti, with distant roars of lions and a sky full of stars.

**Accommodations:** Kichakani Camp (three nights), Serengeti

**Meals:** B, L, D

**PLEASE NOTE:** *This is a typical itinerary, and actual activities may vary to take advantage of weather conditions, local events and to allow serendipity to play a hand in your experience. Accommodations are as outlined in the itinerary, although we reserve the right to change these should the need arise. See our booking terms and conditions for more information about our change policy.*

## DAY 9: Serengeti fly-over and Departure

After breakfast, we drive to a nearby airstrip, say goodbye to our naturalist guide, and board our flight to Arusha. Seeing the Serengeti from above is an experience few others ever have, and it is unforgettable. Upon arrival in Arusha, you are met by a Boundless Journeys driver for a transfer to a lodge where you have a day-use room to rest and prepare for your evening international flight. A transfer to the airport in time for your flight will be provided.

**Accommodations:** Mount Meru Game Lodge (day-use), Arusha

**Meals:** B, L

# ACCOMMODATIONS

First-class lodges and deluxe traditional tented safari camp; all private baths.



## NIGHT 1

### Arusha Serena Hotel & Spa

Arusha

Tel 011-255-0682-310-007 | 011-255-0682-309-748

Fax 011-255-272-553-316 | [arusha@serena.co.tz](mailto:arusha@serena.co.tz)

Nestled at the foot of the wooded slopes of Mount Meru, this unique hotel stands on the shores of tranquil Lake Duluti. Designed to echo the traditional style of a colonial coffee farm, which originally stood on this site, Lake Duluti Serena Hotel offers tastefully presented cottage-style rooms set amid extensive landscaped grounds.



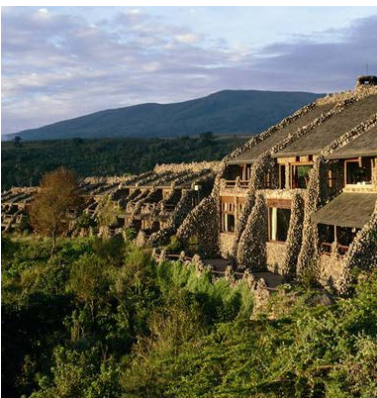
## NIGHT 2

### Lake Manyara Serena Lodge

Rift Valley

Tel 011-254-732-123-333

Perched on the edge of a towering escarpment overlooking the sparkling waters of Lake Manyara, Lake Manyara Serena Lodge is designed around its panoramic scenery. The lodge features a simple timbered reception area, built in traditional African style, a dining room, bar and veranda, below which lies the pool. Each circular two-storey rondavel-style room offers spectacular views over the lake.



## NIGHT 3

### Ngorongoro Serena Lodge

Ngorongoro Crater

Tel 011-255-27-253-7053

Hugging the jagged crater rim, each of the rooms of this deluxe safari lodge has its own private balcony, offering uninterrupted views of the volcanic amphitheater far below. The stone lodge features a grand hearth, where a fire is kept constantly lit to ward off the chill of the crater rim evenings. Arched stone passages, timbered decks, and walls decorated with stylized prehistoric cave paintings and lit by torches evoke the essence of African travel.



## NIGHTS 4 & 5

### Serena Serengeti Safari Lodge

Serengeti National Park

Tel 011-255-27-254-5555 | [africa@sanctuaryretreats.com](mailto:africa@sanctuaryretreats.com)

Set high on a tree-clad ridge, commanding panoramic views across the Serengeti, this lodge offers a fusion of traditional African architecture and modern comfort. Centrally located adjacent to the famous Western Corridor and Grumeti River, the lodge has been designed to blend into the landscape. A series of traditional domed rondavel-style rooms are widely spaced throughout the grounds, cooled by groves of acacia trees and sparkling streams.



## NIGHTS 6, 7, & 8

### Kichakani Camp

Serengeti National Park

Tel 011-255-27-250-9817 | [reservations.tanzania@sanctuaryretreats.com](mailto:reservations.tanzania@sanctuaryretreats.com)

This well-appointed, updated take on a classic “campaign” tented camp moves seasonally, so that we are always close to the great migration in privacy and style. 10 spacious guest tents with comfortable beds, side tables, and a writing desk are scattered across a private, remote landscape. Ensuite bathrooms attached to each tent include shower, flush toilet, wash basin and vanity. There is also a dining and lounge tent with waiter service and a fully stocked bar, ready to supply a drink to refresh you as you watch a spectacular Serengeti sunset.



## DAY 9 (DAY USE ONLY)

### Mount Meru Game Lodge

Usa River

Tel 011-255-689-706-760 | [info@mtmerugamelodge.com](mailto:info@mtmerugamelodge.com)

Set in the shade of ancient mango trees near Usa River just 25 minutes from Kilimanjaro International Airport, day-use rooms are provided for resting and repacking before your international flight, if you have not reserved our *Zanzibar: The Spice Island* trip extension.



# WHAT TO EXPECT



## TRIP RATING

Boundless Journeys' trips are designed for energetic and flexible individuals who like to be active and have a spirit of adventure and a positive attitude. *Great Migration Safari* is rated 1, easy, on a scale of 1-5 (with 5 being the most strenuous). We combine deluxe camping and lodges as the base for our primary activity – game-viewing drives by 4WD vehicle. Depending on current conditions, there may be opportunities for optional guided bush walks, which can be enjoyed by anyone who is in reasonably good health.

## PREPARING FOR THIS TRIP

It is very important that you realistically assess your physical condition with regard to the demands of this trip. While this trip is not physically strenuous, a certain amount of agility is required for getting in and out of safari vehicles and occasionally walking over rough ground. Regular walking and other exercise prior to the trip will prepare you for the activities (consult your doctor before undertaking any new fitness program). Please contact us if you have any doubts regarding your physical match with this tour.

## SERENGETI CAMPING

Our luxury Serengeti camp provides the ideal blend of adventure and comfort while exploring this remote wild area. The camp moves seasonally based on migratory patterns of the herds at each specific time of year, so we have the best chances of being close to the action. Amenities such as a wash basin and vanity, towels, soft bathrobes, full-size queen (or twin) beds, hotel-quality linens, writing table, and covered outdoor sitting area are standard. Electricity is available for recharging camera equipment and hairdryers are supplied.

Camp life is relaxed and comfortable. Upon returning from the day's game drive in the afternoon, there is time to wash up, rest, read, write, or chat with your guides and each other over a drink. As evening falls a campfire is lit, and the camp chef prepares dinner. If the weather is particularly fine we may dine al fresco, surrounded by torches, or we may dine in the dining tent. Either way, our table is set with linens and fine dinnerware, silverware, and glasses.

## GAME DRIVES

Unforgettable full and half-day game drives are the primary activity of Boundless Journeys' Tanzania safari. On most days, we will depart our lodge or camp early and spend the morning tracking various animals in our custom-built, 4WD safari vehicles. Each day is unique and unpredictable – which is why our guides say never put away your camera, even on the way to the airstrip!

Drives may last from a few morning hours to a full day. Sometimes we will take a picnic lunch, and other days we will return to the lodge or camp for lunch. As we come upon groups of animals, we allow plenty of time to simply observe and also take photographs. Our guides are experienced naturalists and will add greatly to your understanding of the wildlife. We keep a respectful distance – although the same cannot always be said about the animals; it is not unusual to come nose-to-car with baboons, zebras, wildebeest, gazelles, and elephants.

## WEATHER

The weather in Arusha and the national parks is generally pleasant though the equatorial sun is strong. It can rain at any time, but chances are higher during the months of April,

May, June, November, and December. In the Ngorongoro area, evenings and early mornings can be chilly, and dressing in layers is a good strategy, so that you can shed or add layers as the day heats and cools.

The following are average temperatures in Arusha during the peak seasons:

AVERAGE TEMPERATURE °F (HIGH/LOW) ARUSHA	
DEC-MAR	JUNE-OCT
low-mid 80s/low 50s	mid 70s/high 40s

You may obtain more detailed weather information at [www.weatherbase.com](http://www.weatherbase.com).

## WHEN TO GO

Our safaris coincide with important times in the annual migrations, as well as take advantage of other significant animal activities and weather patterns.

### DECEMBER-MARCH - Calving Season

The herds have typically arrived in the southern short grass plains of the Serengeti by now, and tens of thousands of wildebeest have their babies over the course of just a few weeks. A safari at this time of year will certainly offer sightings of enormous herds of wildebeest, along with all of the other African wildlife one would expect.

### JUNE-JULY - Migration moving North

Large herds are on their way north, migrating through the Western Corridor and across the Grumeti River. If you are lucky, we may witness herds crossing the Grumeti – while this can't be guaranteed, a safari at this time increases your chances.

### AUGUST-OCTOBER - Migration in the North

The large herds are generally in the north and have scattered around the northern Serengeti, as well as crossing back and forth over the Mara River into Kenya's Masai Mara. If you are lucky, we may witness herds crossing one of the large northern rivers – truly a sight to behold. Even when large herds have migrated into the Mara, there are always many left in the Northern Serengeti, and far fewer people than on the Kenya side of the border.

### OTHER TIMES

We suggest avoiding November and April through the first half of May, as those months comprise the rainy seasons in Tanzania. Outside of those months, there are great

reasons to visit Tanzania at any time, and no matter when you choose to go, you will see more elephants, giraffes, wildebeest, zebras, gazelles, buffaloes, hippos, ostriches, baboons, and lions than you can keep track of. If you are interested in organizing a private safari for your own group of family or friends on the dates that work for you, please contact our office at 800-941-8010 to discuss the options.

## TRAVELER'S RESPONSIBILITY

Trip participants have certain responsibilities to both Boundless Journeys and your fellow travelers. This includes understanding the conditions described in the trip itinerary and making sure it is appropriate for your interests and abilities, based on a review of the trip ratings, consultation with Boundless Journeys' staff, and perhaps your doctor. In addition, trip participants are responsible for preparing for a trip by undertaking the proper fitness training. At the guide's discretion, a participant may be asked to leave the trip if the guide feels that the person's further participation may be detrimental to the individual or to other trip participants. If you have any questions about the difficulty level of the trip you have chosen, please contact Boundless Journeys to speak with one of our Destination Managers.

## SMALL GROUP TRAVEL

Small group travel affords us the opportunity to seek out the most remote and exotic destinations on the planet. Often we are exploring these locales with just 8-10 guests. The nature of active group travel is such that not all participants have the same ability level or interests. Traveling at a pace that is comfortable for the entire group, with a spirit of flexibility and adventure, are all part of this shared experience.

## DRINKS WITH MEALS

At Boundless Journeys we believe group dinners are a time to celebrate our day, while enjoying the best of local cuisine, and good company. In keeping with this spirit, we typically include local beer and wine with group dinners. If you prefer premium wine, or liquor, please feel free to order what you like, and you may settle your tab at the end of the meal.

## DRINKING WATER

We provide purified or bottled water on all trips; however, in an effort to reduce waste, we strongly encourage you to bring a water bottle to refill where safe to do so. This will be the case in much of Europe, as well as a few other



destinations, where tap water is safe to drink. In parts of the world where water must be purified, bottled water may be our only option. Here, we do our best to provide purified water from larger containers to refill your bottles, rather than using many small single-use bottles throughout your trip. This is just one small way we strive to travel more responsibly and we appreciate your efforts in helping us to protect the extraordinary places we visit.

Boundless Journeys has taken the Travelers Against Plastic company pledge to promote sustainable travel and encourage travelers to avoid buying bottled water when they travel. You can take the pledge, too, and learn more about TAP's efforts at [www.travelersagainstplastic.org](http://www.travelersagainstplastic.org).

## CUISINE

In the permanent camps and lodges, continental-style cuisine is served, although there is often an Indian or traditional African influence (curries, for example, are popular, or chicken stewed in tomatoes and coconut milk). Breakfast and lunch in the lodges are often served buffet-style, while dinner is à la carte. Meals in safari camps may be served family-style, and Tanzania's talented bush chefs blend traditional African dishes with more familiar fare. Vegetarians can be accommodated with advance notice, though choices tend to be more limited. Please inform us of specific dietary restrictions by completing your Smartwaiver form.

## TRANSPORTATION

All on-safari ground transportation is provided in private, closed-sided, open-topped safari vehicles that open so that you may stand and enjoy 360-degree views. We use custom built, 9-passenger Land Rovers or Land Cruisers, limited to no more than six guests per vehicle so that each guest has a window seat and plenty of space (except airport transfers, where a private shuttle van is used).

Our trip ends with a scenic air transfer to Arusha aboard a small aircraft that may be shared with other travelers. This is typically in a 12-seater Cessna Grand Caravan, although the exact plane size and type can vary based on group size.



# OUR TANZANIA TEAM

## TRIP MANAGER



### **Karen Cleary**

Born and raised in Vermont, Karen was a founding employee of Boundless Journeys, which allowed her to travel extensively to expand our collection in the early years. She soon began focusing her attention on Africa, deepening her knowledge to become our safari specialist. She has explored eastern and southern Africa's wild places numerous times and never tires of the grandeur. Karen enjoys hiking, skiing, and mountain biking with her family and their dog, Max.

## GUIDES

With a Boundless Journeys guide, your experience is that of friend and local adventurer. We believe strongly in working with local guides, experts in the areas to which we travel, and they hold the keys to unlocking the hidden delights of your chosen destination. Although you will never know they are at work—the mark of a truly great leader—our guides make magical things happen and add a dimension to your trip that you could not experience on your own.

Over the years we have forged bonds with some of the best guides in the world, and we typically work with a small team of guides in each region. You will be informed of the guide for your trip one month prior to your departure.



### **Nuru Bakari**

Nuru was born and raised at the base of Mount Meru in the Arusha region of Tanzania. Growing up in close proximity to many of Tanzania's national parks and conservation areas teeming with wildlife has no doubt had an influence upon Nuru. During his time at Mount Meru Guiding College, where his studies were focused on the local flora and fauna, he contributed to the Tanzania Birds Atlas by collecting and analyzing data on the endemic bird life.

In addition to Nuru's vast knowledge of Tanzania's plant and animal life, he is also a skilled mechanic (handy when exploring the bush in a Land Rover!) as well as fluent in English, Swahili, Spanish, and Italian. His skills, knowledge, and 12 years of experience leading safaris makes him an exceptional guide!

What other guests have said about our guides in Tanzania:

*"From the moment we arrived in Arusha and were assisted through customs and immigration to our final departure in the early hours of the morning, we were looked after by Boundless Journeys extremely well. Our guide Nuru must be one of the best in all of Africa. It was the trip of a lifetime that we will never forget!"*

- A.W. & J.C., Clayton, ON

*"Our guide, Wilfred, was awesome! We always felt safe and worry-free in his care. We were so happy to meet him and it was sad saying goodbye to him at the end of the trip. He tried so hard to show us everything and he succeeded. We even saw the wildebeests crossing the river - what a bonus!"*

- L.J. & M.J., Sarnia, ON

# NEXT STEPS



## TO MAKE A RESERVATION

You can call Boundless Journeys at 800-941-8010, request a reservation online, or contact your travel agent. We will confirm your spot with a deposit of \$500 per person and the payment of internal airfare, payable by check or credit card.

## ONCE YOU RESERVE

As soon as you confirm your adventure, we will provide you with an extensive, detailed trip planner that includes arrival and departure instructions, a complete packing list, regional information, required documents, a reading list, and other details.

## CANCELLATION & REFUND POLICY

Please check our Terms & Conditions page on our website for our comprehensive cancellation and refund policies: [www.boundlessjourneys.com/terms-and-conditions](http://www.boundlessjourneys.com/terms-and-conditions).

## TRIP CANCELLATION INSURANCE

In addition to your detailed trip planner, we will email you a quote for Travel Guard trip insurance. Please let us know if you would like us to purchase a policy on your behalf. Boundless Journeys strongly recommends purchasing Trip Insurance.

## QUESTIONS? WHICH TRIP IS RIGHT FOR YOU?

Adventure travel may involve exotic destinations, unusual levels of physical exertion, and activities that may be new to you. If you have any questions about the level of comfort, difficulty, or activities included on your trip, please call Boundless Journeys at 800-941-8010, or email us at [info@boundlessjourneys.com](mailto:info@boundlessjourneys.com). Our travel experts look forward to helping you select the perfect adventure.

### VISIT US ONLINE

[www.boundlessjourneys.com](http://www.boundlessjourneys.com) for:

- additional departures
- special promotions
- detailed itineraries
- inspiring photography
- guide bios

### FOR MORE WILDLIFE:

- SOUTH AFRICA: Ultimate Cape Town & Kruger Safari
- BOTSWANA: Undiscovered Okavango Delta Safari

### EXTENDING YOUR TRIP?

Consider. . .

- RWANDA: Mountain Gorillas of Rwanda
- ZANZIBAR: The Spice Island

### PREFER A PRIVATE TRIP?

The perfect option for alumni and family reunions, birthdays and anniversaries, or just to catch up with friends in fabulous destinations. Mark your calendar and leave the planning to us! Call our travel experts today: 800-941-8010.

# BOUNDLESS BEYOND



## RESPONSIBLE TRAVEL

At Boundless Journeys, our goal is to create meaningful experiences that protect the delicate ecosystems and attributes of every location we visit. We aim to educate our guests on the best responsible travel practices for each destination.

## WE ARE COMMITTED TO

**Making connections.** Our local guides offer insider knowledge of their country, including tips on etiquette and customs. They facilitate meaningful interactions with the people and places we visit, such as dinner at the home of a local family. While you may arrive in a destination as a visitor, you leave with a deeper understanding and connection to each place.

**Going local.** Boundless Journeys' small group size stems from a desire to provide a more intimate traveler experience, giving us the freedom to move through the tight alleys of old towns on foot, eat and sleep at traditional guesthouses, participate in immersive cultural exchanges, and leave a smaller footprint on all of the locales we visit. This mobility allows us to support local economies directly, forging strong relationships with our partners and friends abroad as we return year after year.

**Respecting people and the environment.** We support organizations working to protect ecosystems and improve the livelihoods of local communities. On many of our trips, we explore stunning natural landscapes where conservation is of the utmost importance. As visitors, we practice Leave No Trace ethics and actively contribute to the conservation of parks and protected areas.

## HOW YOU CAN HELP

**Give back.** Instead of receiving a Boundless Journeys t-shirt or water bottle, you can opt to donate the value of your gift to our travel scholarship fund, which will be awarded to a local student for an educational or service-based travel opportunity.

**Learn more.** Visit [boundlessjourneys.com/responsible-travel](https://boundlessjourneys.com/responsible-travel) to read more about how our values are reflected in our trip offerings. We also offer a selection of Resources for the Responsible Traveler, which suggests ways to tread lightly and ensure your journey has a positive impact.

**Join us.** Boundless Journeys has taken the Travelers Against Plastic company pledge to promote sustainable travel and encourage travelers to avoid buying bottled water when they travel. You can take the pledge at [travelersagainstplastic.org](https://travelersagainstplastic.org).

## CONSERVATION IN ACTION

Boundless Journeys is a proud member of the Adventure Travel and Trade Association, a global network of adventure seekers who believe in the protection and promotion of local communities and wilderness areas.

